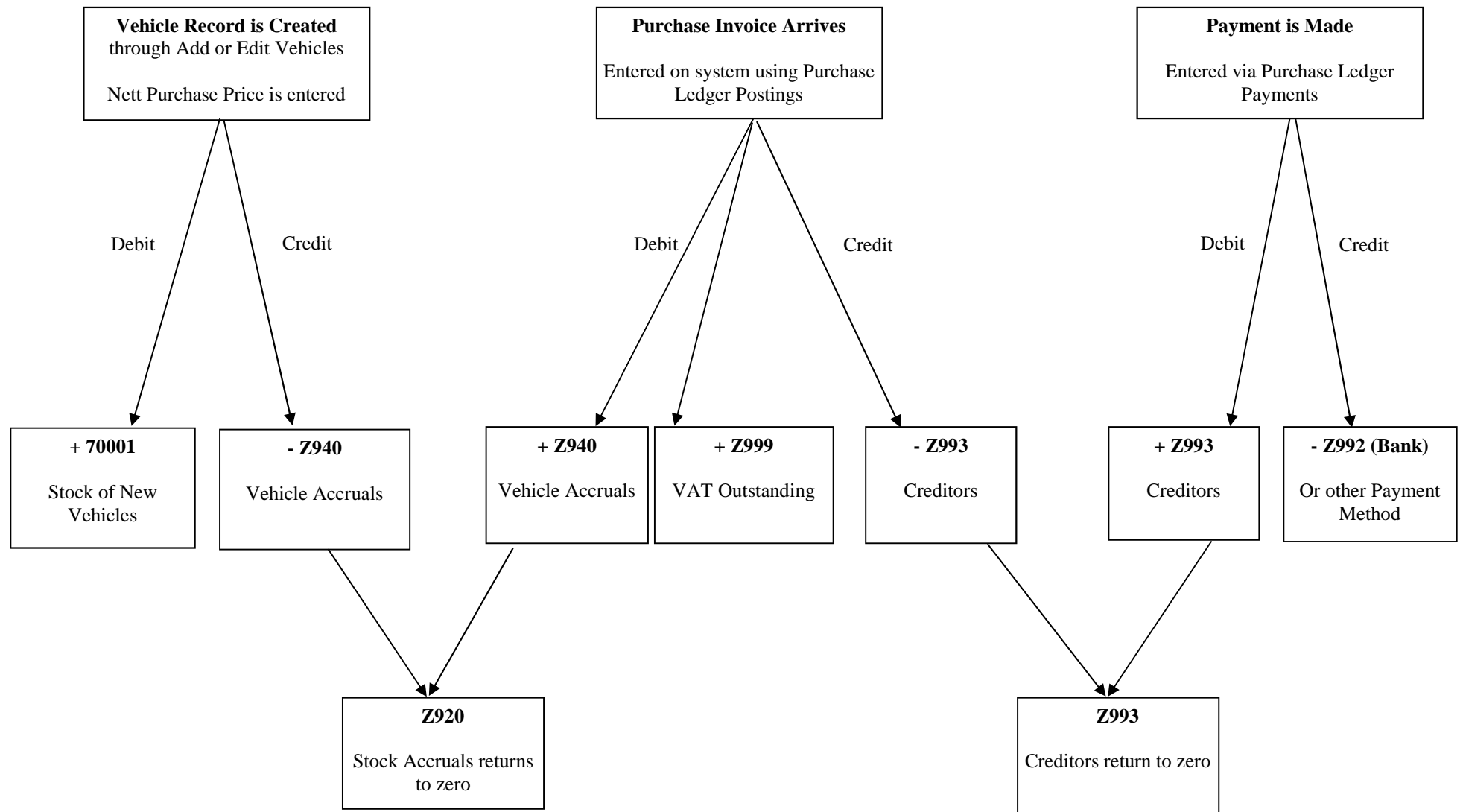
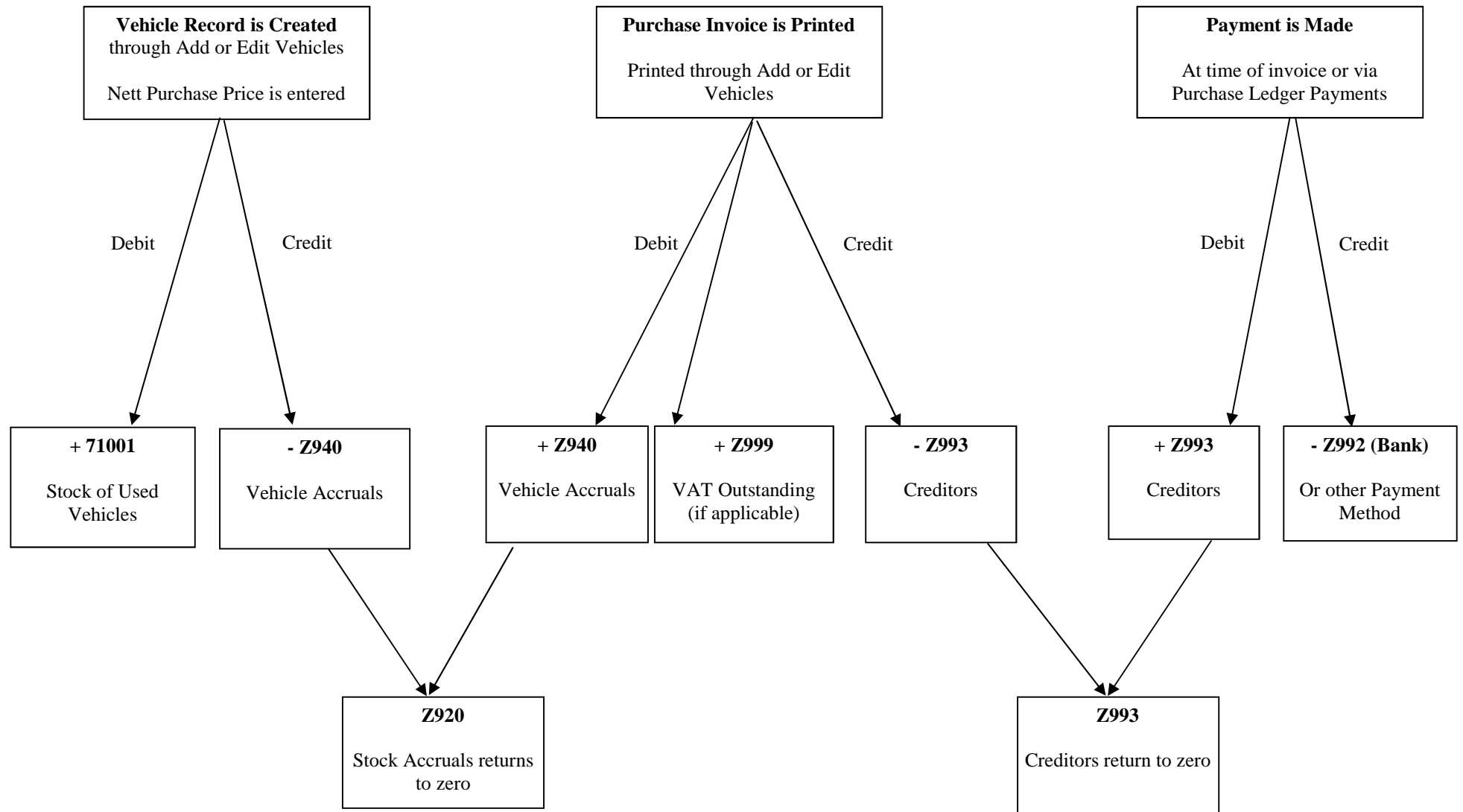


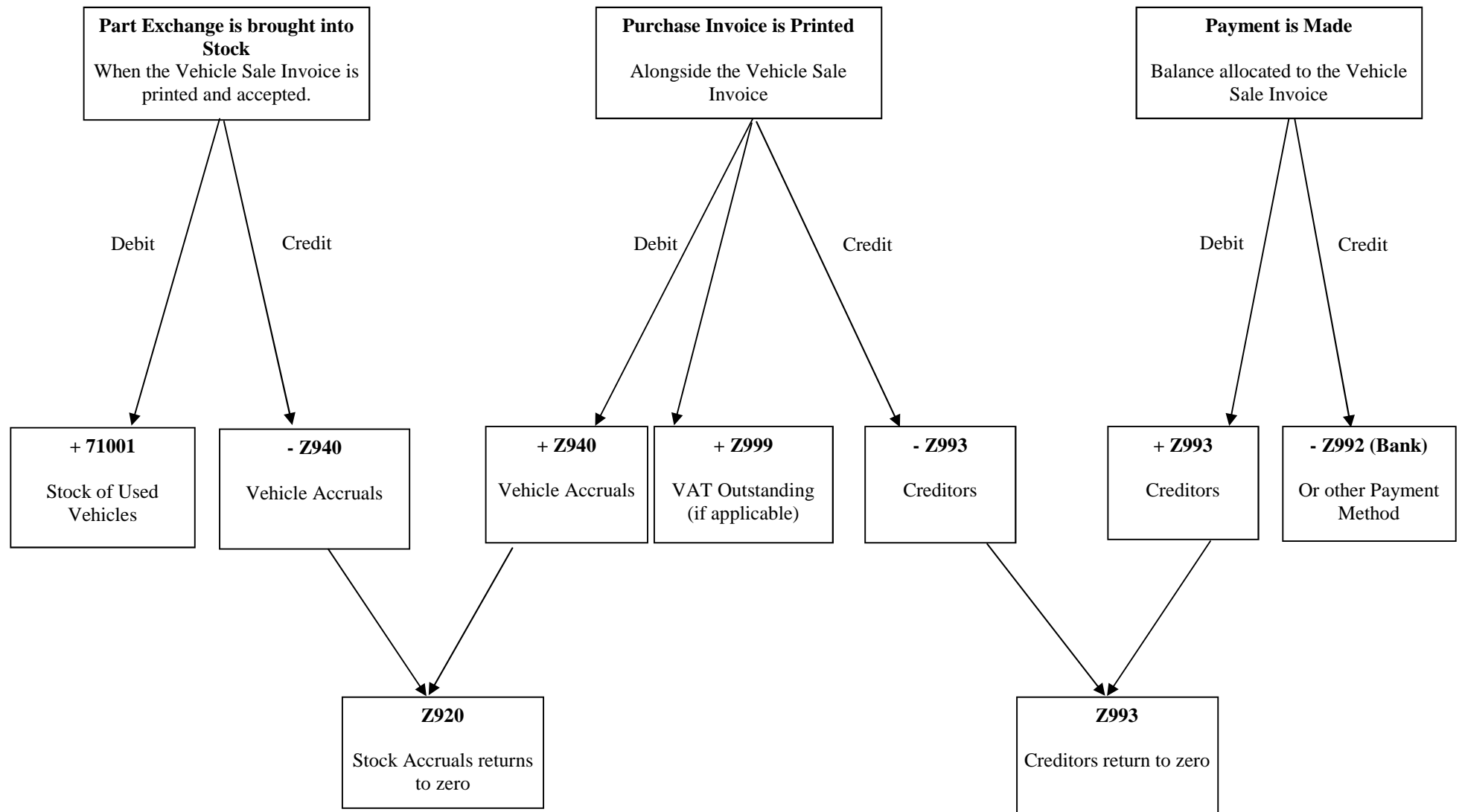
1. CREATING NEW VEHICLES



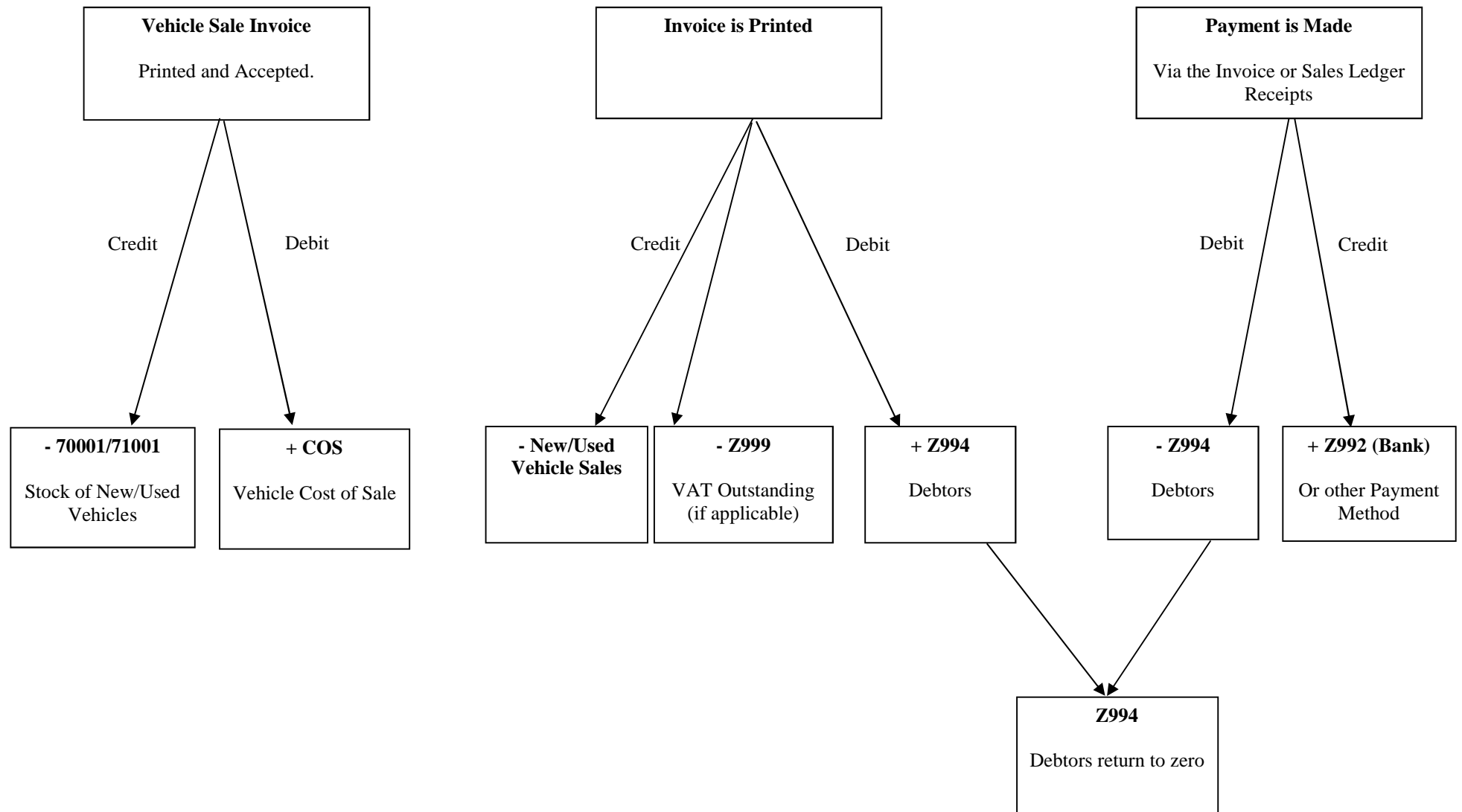
2. CREATING USED VEHICLES (Not Part Exchange)



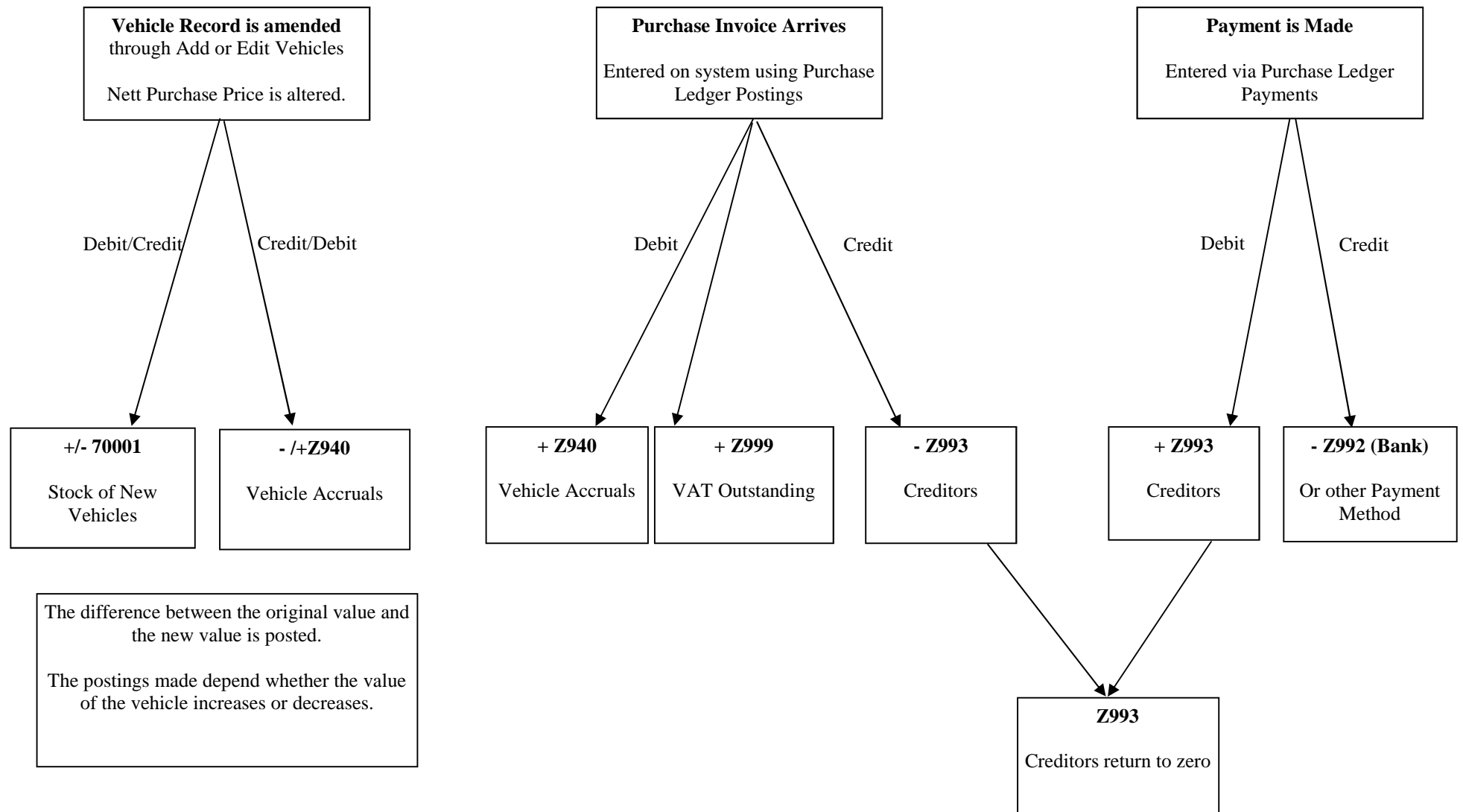
3. CREATING USED VEHICLES—PART EXCHANGES



4. VEHICLE IS SOLD



5. AMENDING THE PURCHASE PRICE OF A NEW VEHICLE



6. VEHICLE EXPENSES FOR PARTS USED IN WORKSHOP OR STOCK CONTROL

